

Quick cosy cushions!



You can add a fresh touch to your home quickly with a few nice cushions. Our ready-to-go fabric pieces (50x70 cm) are great for sewing different cushion models. And for an extra special touch, you can decorate the cushions with ribbons and buttons, or why not add designs with fabric paint or transfer paper?

Remember to wash all fabrics before you start sewing or applying prints. Zigzag all of the edges before you begin sewing the fabric pieces together. **Tip!** If you want to add transfer prints or other decoration to your cushion, it's easiest to do so before sewing the front and back pieces together.

Tube cushion

Fold the edges 3 cm in along the short sides and press with an iron. Sew about 2 cm in, so that you end up with a channel on either side.

Fold the fabric piece down the middle, right side to right side, to form a piece that is about 64x25 cm. Sew along the long side, about 1 cm from the edge, but do not sew up the channels.

Turn the cushion case right side out. Cut two 60 cm pieces of ribbon. Use a safety pin to thread the ribbon through the channels.

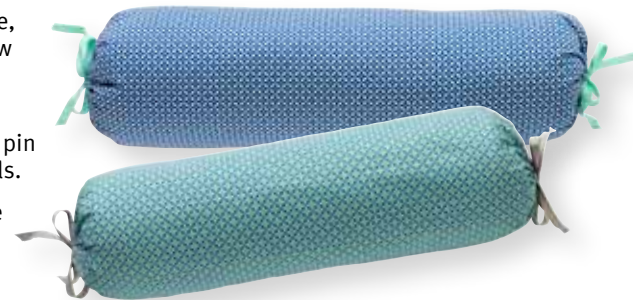
Fill with wadding or fibre felt. Tighten the ribbon at the sides, and tie a bow.

Completed size about 52x15 cm

Materials required:
1 fabric piece (50x70 cm), such as 305033
2 cover buttons, 569133 (and fabric to use for covering)
approx. 1 m ribbon, such as 304485
approx. 140 g wadding, 712718

Completed size about 52x15 cm

Materials required:
1 fabric piece (50x70 cm), such as 305033
Approx. 120 cm ribbon, such as 304483
Approx. 120x50 cm fibre felt, 300192 or approx. 200 g wadding, 712718



Round cushion with buttons

Fold a piece of fabric in half, right side to right side. Cut out a paper circle with a 32 cm diameter, then trace the template onto the fabric. Pin the doubled fabric together and cut out the shape, with an approx. 1 cm seam allowance all around.

Sew around the circle, leaving an opening of 10–15 cm. Turn right side out. Fill the cushion with wadding and sew up the opening by hand.

Cover the buttons with matching fabric and sew them to the middle of the cushion (sew through the entire cushion), one on each side.

Glue with fabric glue (220531) or hand-sew a ribbon around the edge of the cushion.



Completed size about 25x38 cm

Materials required:

1 fabric piece (50x70 cm),
such as 305030
Approx. 140 g wadding, 712718



Cloud cushion

Fold a piece of fabric in half, right side to right side. Cut out the template from paper, trace the pattern onto fabric and pin them together. Cut out the shape, with an approx. 1 cm seam allowance all around. If you want a slightly bigger cloud, you can add another couple of cm around the entire shape.

Sew around the shape, leaving an opening of 10–15 cm at the bottom. Cut a small notch in the seam allowance at the fold to prevent the fabric from pulling together when you turn it (see image 1). Turn the cushion right side out; fill with wadding and sew up the opening by hand.

You can easily vary the next two sets of instructions with different sizes.

Cushion case with zipper



Completed size about 50x50 cm

Materials required:

2 fabric pieces (50x70 cm),
such as 305029 and 305037
About 45 cm zipper, such as 982345

Place the fabric pieces right side to right side and sew a 3–5 cm long seam on either side, 2 cm from the bottom edge (image 1).

Press the seams apart and iron along the entire edge. You now have two folded edges facing one another, with an opening in the middle. Cut the zipper a few cm longer than the opening. Pin it from the inside of the case, so that the front of the zipper sticks out in the opening a little bit. Sew on the zipper as seen in image 2, and secure it a bit extra at the ends. To make sure you do not sew the pull tab, move it as you sew.

Leave an opening in the zipper. Place the fabric pieces right side towards right side, and sew together the remaining three sides (image 3). Cut off the corners and turn right side out.

Measure your pillow and add 2 cm to the bottom edge. Cut two fabric pieces with the same dimensions. For example: for a cushion measuring 50x50 cm, cut two 50x52 cm pieces. Add an additional 1 cm seam allowance around the entire piece if you want the case to be a bit looser.



Cushion case with ribbon

Completed size about 50x50 cm

Materials required:

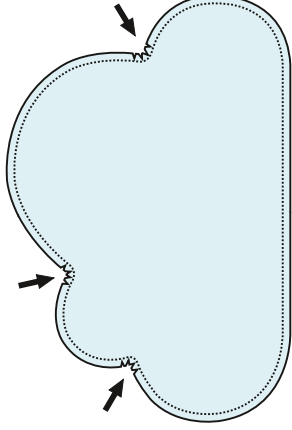
2 fabric pieces (50x70 cm)
Approx. 1.2 m ribbon

Measure your cushion. Add 5 cm to the top of the front piece and 15 cm to the top of the back piece. For a cushion that measures 50x50 cm, you will need a back piece that measures 50x65 cm and a front piece that measures 50x55 cm, see image 1. If you like, add another cm around the entire piece as a seam allowance for a slightly looser case.

Fold down the edge of the back piece 5 cm. Cut two 30 cm pieces of ribbon and pin them at the top edge, with 15–20 cm between them. Sew a seam about 3 cm from the edge, as seen in image 2.

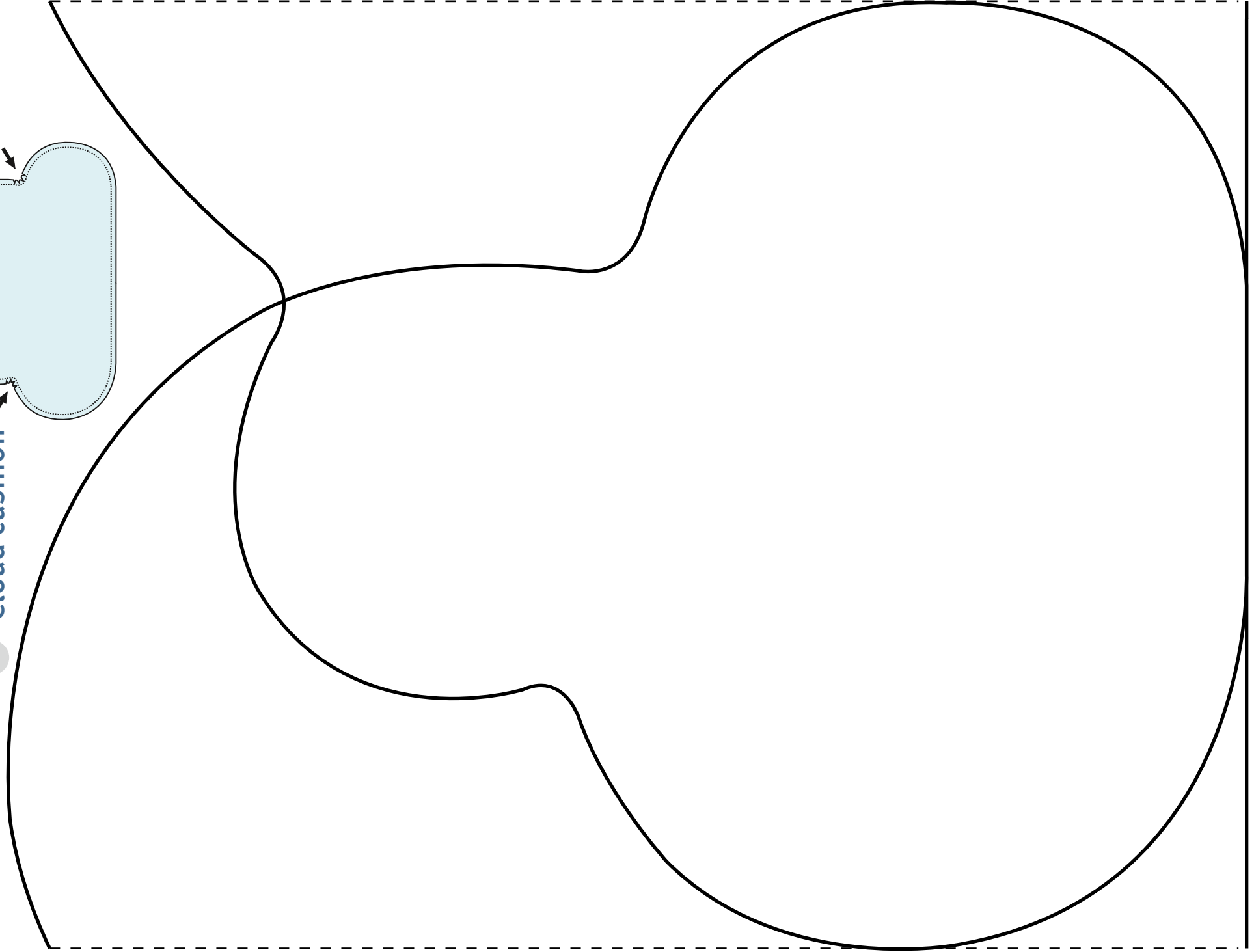
Lay the front and back pieces right side to right side. Fold the back piece over the front piece at the top edge so that the fabric pieces form a square (50x50 cm). Sew up the sides and bottom, see image 3.

Turn the cushion case right side out. Sew two 30 cm pieces of ribbon to the top edge of the back piece, opposite the ribbon on the front, see image 4.

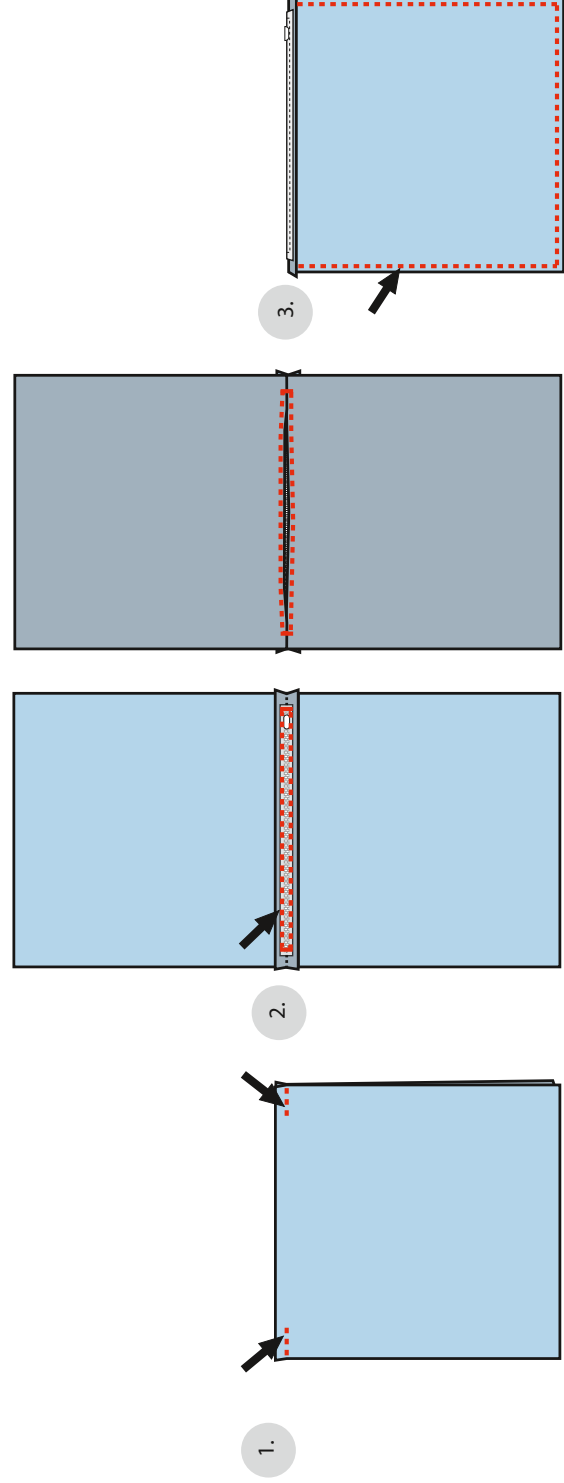


1. Cloud cushion

1.



Cushion case with zipper



Cushion case with ribbon

