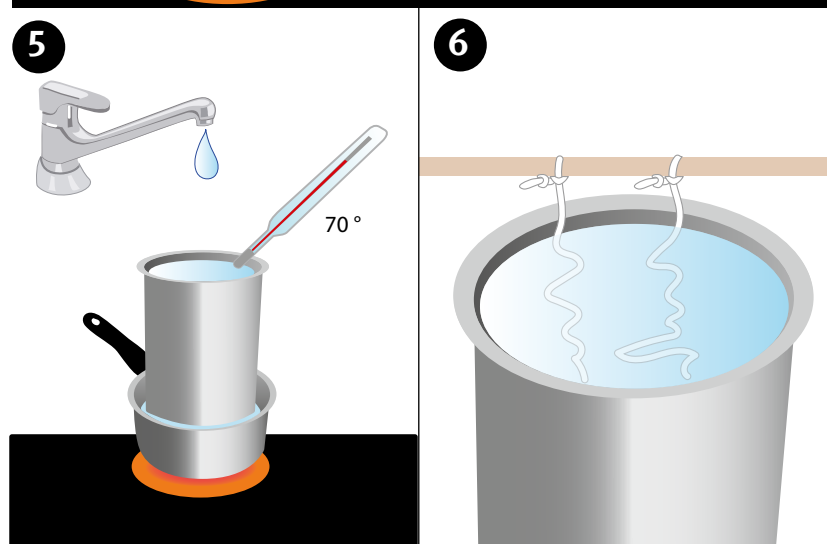
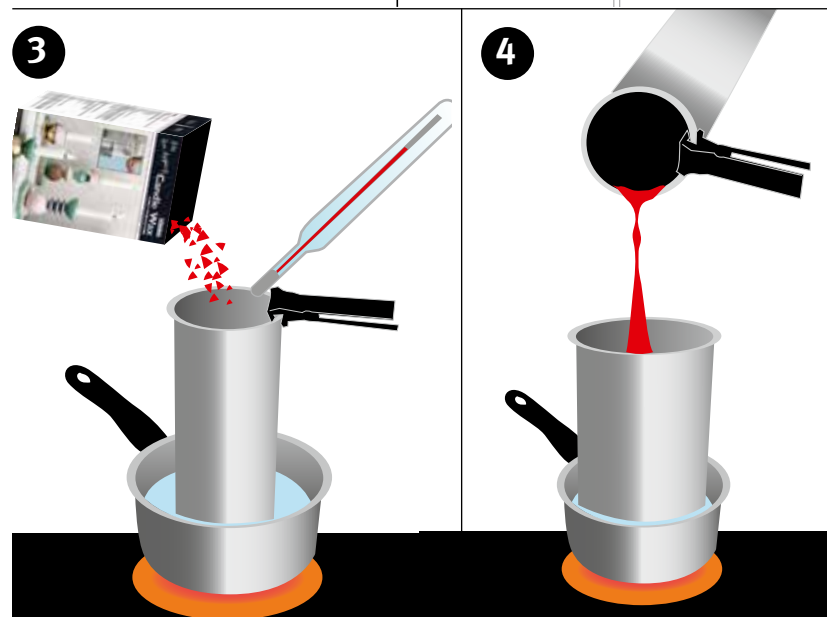
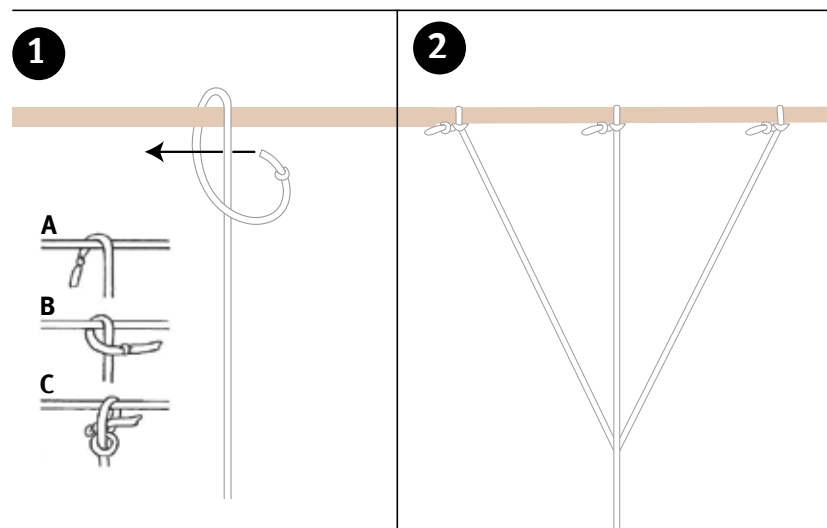


# Dipping wax & candle wicks



*Note! Always melt casting wax in a water bath and never directly in a pot. Never pour cold water into hot casting wax – the wax may bubble up and cause burns. Always have a pot lid nearby when heating casting wax. Do not pour casting wax down the drain.*



## Method:

**1.** Cut the wick yarn into 25–30 cm long pieces. There should be no less than 5 cm between the end of the wick and bottom of the dipping pot.

Tie a knot 1.5–2 cm in on the wick. Lay the wick over the stick with the knot facing away from you, see image A.

Take the knot and place it in front of the wick to the right, see image B.

Move the knot from the left through the loop, but leave the outer tail to the right, see image C. Hold onto the knot and pull the wick hard towards the stick. Attach wicks with 10 cm between them.

**2.** To tie a candle wick tree:

Cut a piece of wick to the length you want your candle to be, and tie it to a stick.

Thread a needle with another wick of the same length and poke it through the centre of the first wick.

Tie the ends to the stick. Dip the same way as simple candles.

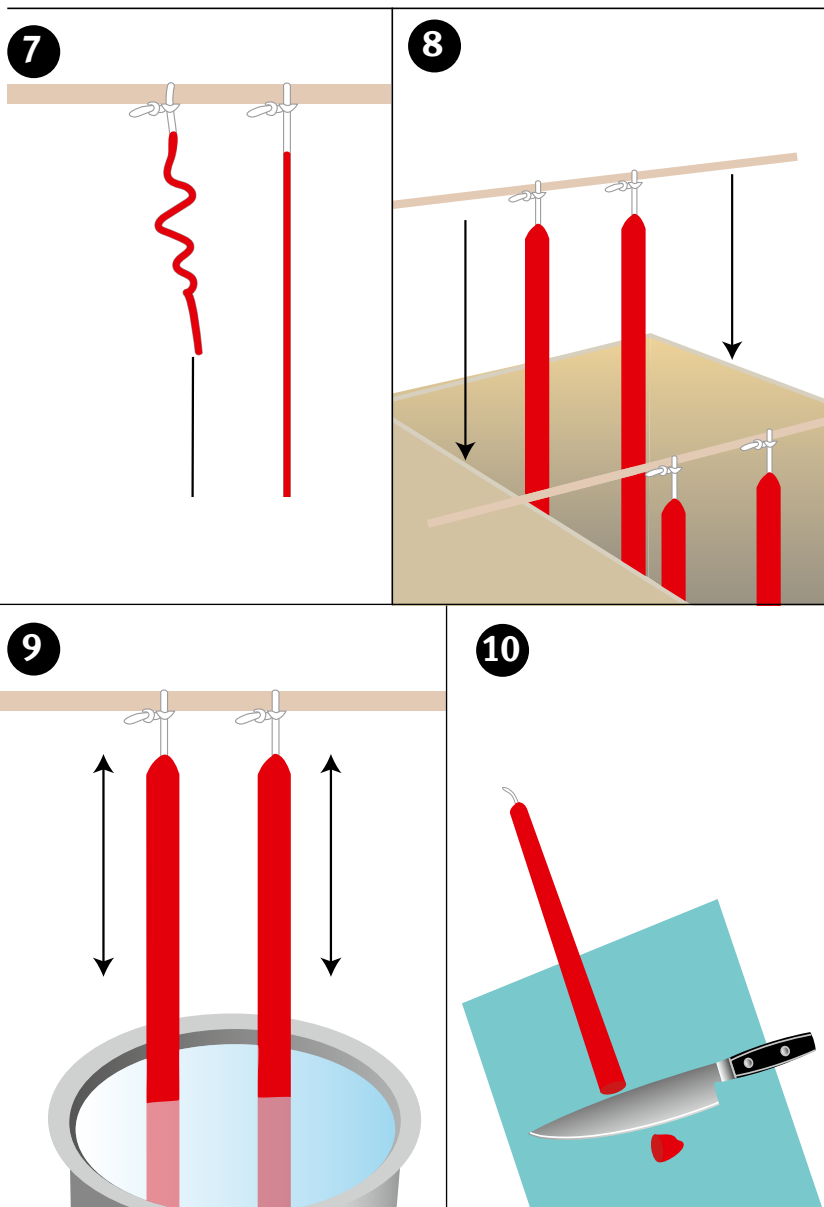
**3.** Pour the dipping wax into a melting pot and place it in a pot of water on the stove. Heat the wax to 70°C.

**4.** Pour the warm wax into a dipping pot, which you then place in a pot of warm water.

**5.** Fill with 70°C water, until the dipping wax almost reaches the edge of the pot. It is essential that both the dipping wax and the water maintain a temperature of 70°C. The dipping wax will float on the water.

**6.** Dip the wicks, which are tied to the sticks, into the dipping wax. They should not be lowered all the way to the water, otherwise the wicks will get wet and crackle when burning. The wicks should be completely submerged in the dipping wax.

# Dipping wax & candle wicks



**7.** Lift up the wicks and pull them straight.

**8.** Hang them on a drying rack.

**9.** Continue dipping and let cool between each dip.

If the candles do not cool between dips, the dipping wax will melt and drip and the candles will be narrower. If you are dipping a lot of candles, you will need to add more dipping wax heated to 70°C. Evenly cut off the drops that have formed at the bottom of the candles.

**10.** Once the candles reach their desired thickness, even them along the bottom edge with a knife. Then let them hang from the rack until they are thoroughly cooled.

**Contents of the package (741021)**

1 kg pre-mixed dipping wax consisting of paraffin and stearin.  
Approx. 5 metres wick (no. 10).

**You also need:**

- Flower sticks
- 2 Pots
- Melting pot
- Thermometer
- Dipping pot
- Scissors
- Sharp knife
- Rack for hanging candles

**Materials required:**

One candle (antique candle) weighs about 50 g.  
1 kg dipping wax yields approx. 20 candles.